

"FS PUMPS" Marine Self-priming Pump for Seawater

- Specially designed for use with seawater.
- Pump and motor are constructed to withstand seawater and operated by a DC 24 V power source.
 1. Seawater proof motor: These motors are specially designed for seawater applications.
 2. Special aluminum compound for motor casing is made to withstand seawater corrosion. Moreover, this material does not add heavy weight to the pump.

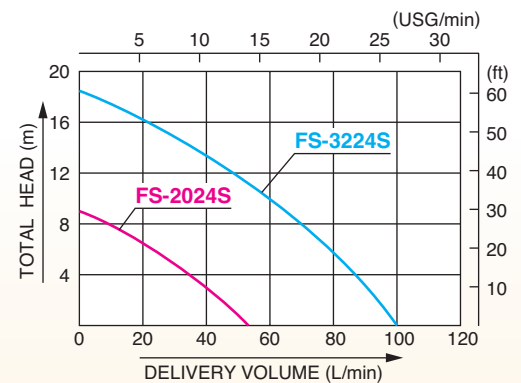


FS-3224S

Specifications

Model	FS-2024S	FS-3224S
Connection Dia	20 mm (3/4")	32 mm (1 1/4")
Connection Thread	Inner Pipe Thread	
Total Head	9 m (30 ft)	18.5 m (60 ft)
Delivery Volume	50 L/min (13 USG/min)	100 L/min (26 USG/min)
Voltage	DC 24 V	
Rated Current	7 A	16 A
Output	90 W / 7000 rpm	200 W / 6200 rpm
Rating	Continuous	
Power Cord	3 m (10 ft)	5 m (16 ft)
Standard Accessories	1 Strainer, 2 Hose Nipples, 1 Set Carbon Brush	
Gross Weight	28.5 kg (62.8 lbs)	28 kg (62 lbs)
Dimensions LxWxH (mm)	780 x 295 x 237	555 x 385 x 325
Packing Unit	5	3

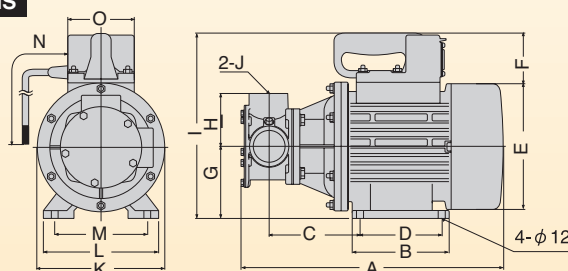
Performance Curve



OUTLINE DRAWING

REVOLVEX PUMP

MF-40MS

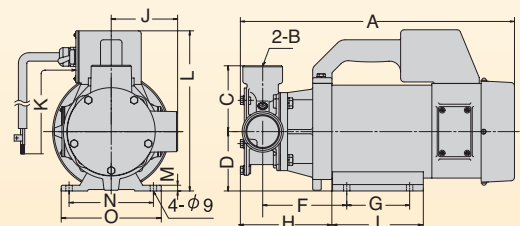


Model	A	B	C	D	E	F	G	H	I	J	K	L	M	N	O
MF-40MS	407	150	143	120	200	90	105	80	293	PS 1/2"	200	170	140	9700	120

RUBBER MASTER

MF-2524

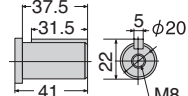
MF-4024M



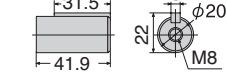
Model	A	B	C	D	E	F	G	H	I	J	K	L	M	N	O
MF-2524	281.5	PS1"	63	60	29	119.5	66	133.5	96	63	5000	205	10	100	120
MF-4024M	394	PS 1/2"	95	75	31.5	119.5	88	131	128	95	5000	200	8	118	140

[Shaft Size]

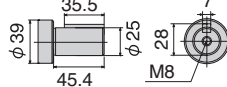
• MF-40S



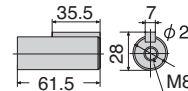
• MF-25S



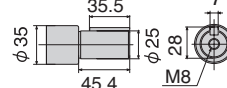
• MFC-80S



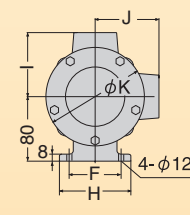
• MF-50S



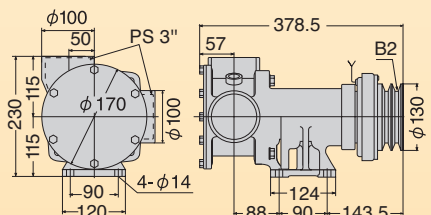
• MF65 Series



MF— MFC—



MFC-80S



Model	A	B	C	D	E	F	G	H	I	J	K	L	M	N(Pulley)
MF-25S-MFC-25S	PS1"	219(234)	60	72(864)	50	60	85	85	70	70	108	136.5	80	B1
MF-40S-MFC-40S	PS1 1/2"	232(247)	62.5	73(88)	55	60	90	90	80	80	123	136.5	80	B1
MF-50S-MFC-50S	PS2"	311(335)	90.5	85.5(108.5)	80	80	105	105	95	95	123	130	91	B2
MFL(C)-65K-MFC-65K	PS 1/2"	384(403)	105	124.5(143.5)	90	90	120	120	115	115	170	130	115	B2