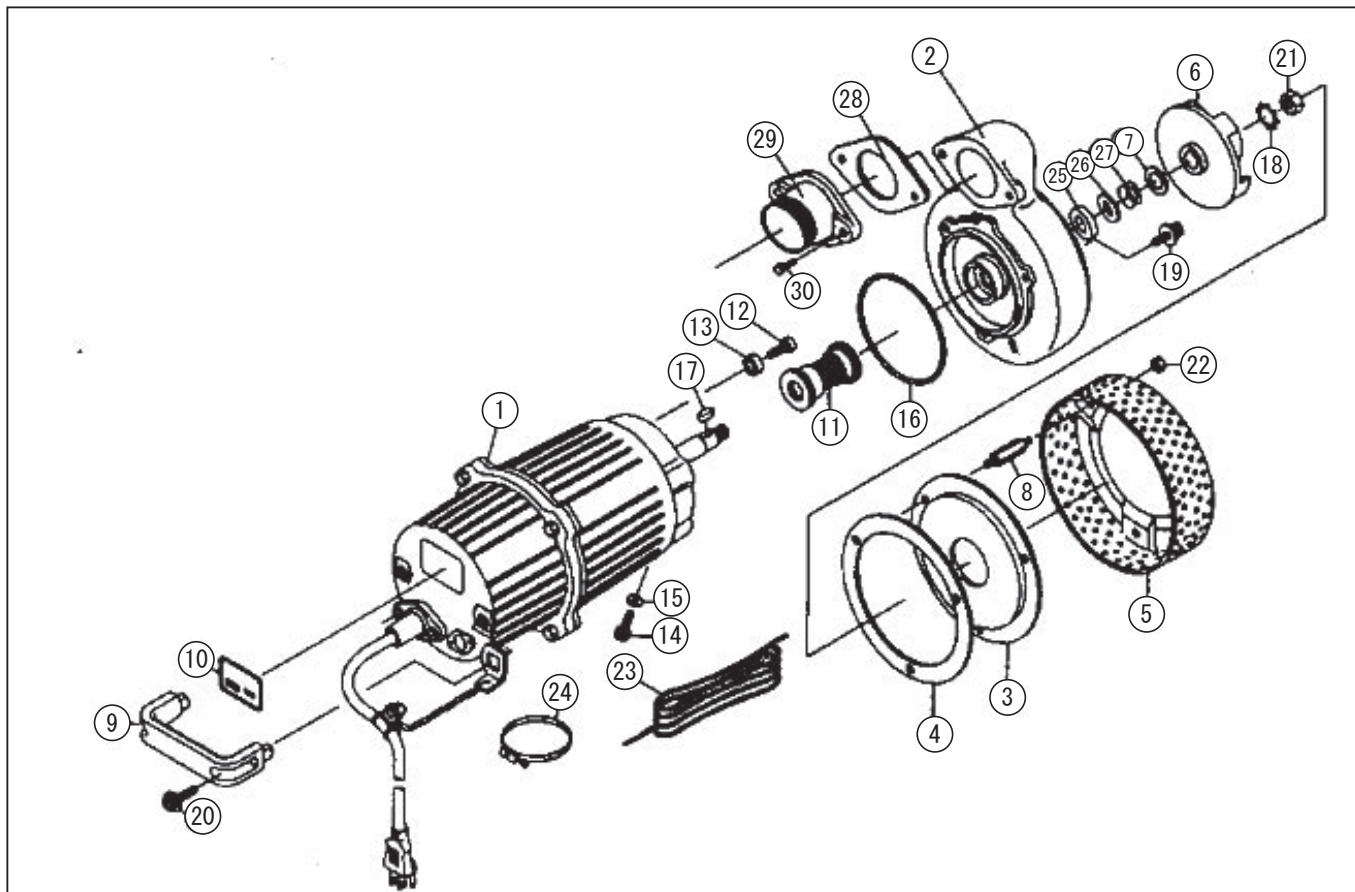


PS-65011CR



DWG No. 039861108 MODEL: PS-65011CR FROM: PS-65011CR-BAB

No.	PARTS CODE	PARTS NAME	QTY	MATERIAL	SIZE	REMARKS
1	039810402	Motor Assy	1			
2	039001105	Casing	1	FC		
3	039001601	Suction Cover	1	SPHC		
4	039001902	Suction Packing	1			
5	039001703	Strainer	1	SPHC		
6	039003004	Impeller	1	FC		
7	039002501	Adjusting Washer	2	SUS		
8	039002001	Stud Bolt	3	SWRM		
9	039002102	Handle	1	PC		
10	039058401	Label	1			
11	039000301	Mechanical Seal	1	DE560		
12	034015301	Screw M6X8	1	SUS	M6X8	
13	034014202	Seal Ring	1	NBR		
14	039003702	Socket Bolt M10X12	1	SUS	M10X12	
15	854255010	Seal Washer	1		φ 10	
16	889955100	O-Ring	1	NBR	G100	
17	884205023	Key	1	SUS	4X4X10	
18	845205010	Toothed Washer	1	SUS	10A	
19	039015001	Socket Bolt M6X16	3	SUS	M6X16	
20	707605057	+ Screw M6X20	2	SUS	M6X20	
21	827405010	Nut M10	1	SUS	M10	
22	827405008	Nut M8	3	SUS	M8	
23	039010101	Rope	1		5M	
24	940019060	Hose Band φ 60	1		φ 60	
25	043029901	Thrust Packing	1	CR70 °		
26	039053701	Thrust Washer	1	SUS 304		
27	895154014	Oil Seal	1	VR14A		
28	039009201	Delivery Packing	1	CR		
29	043014301	Npt Delivery Flange	1	FC		
30	703305102	+ Screw M5X14	2		M5X14	