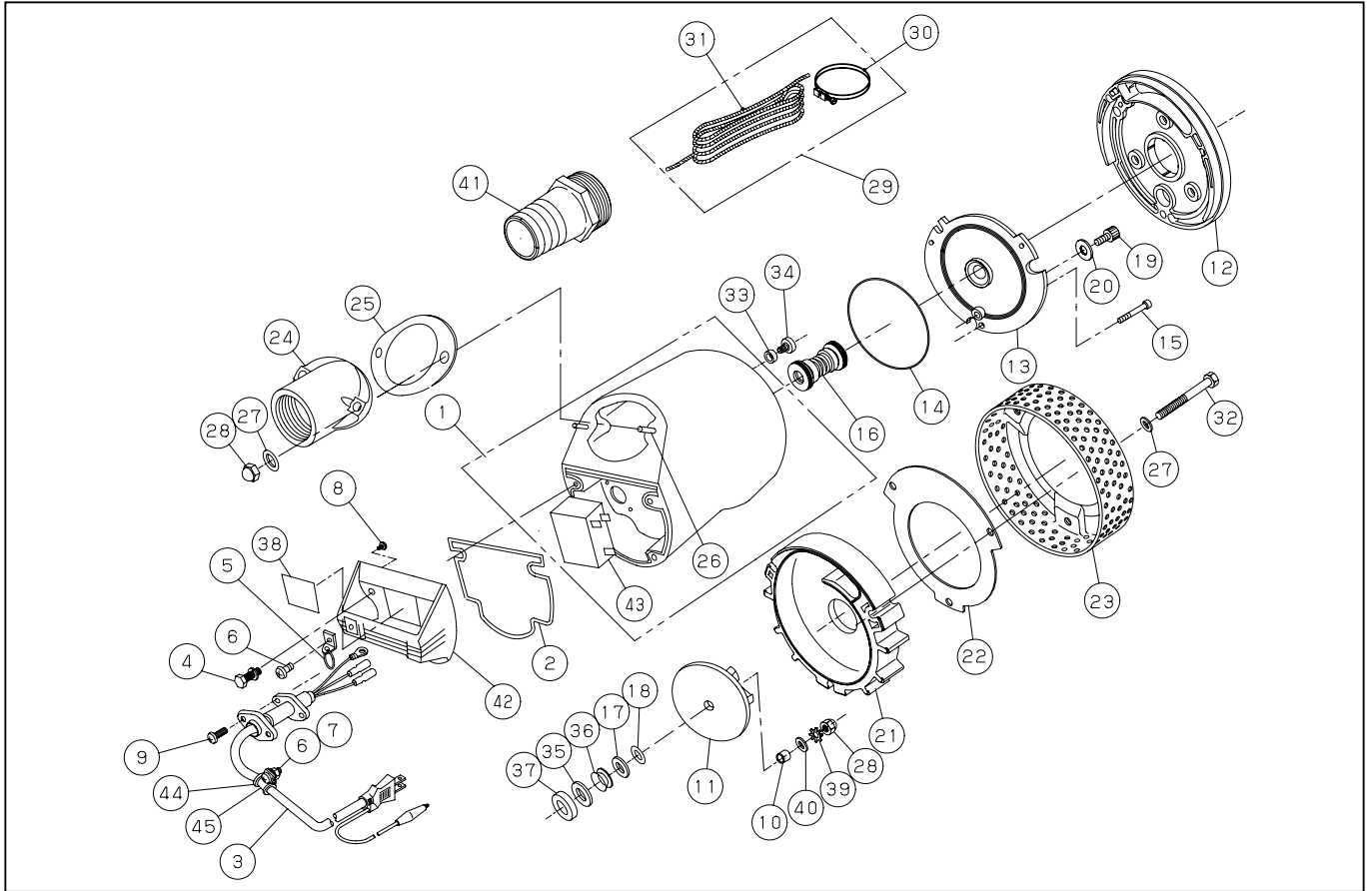


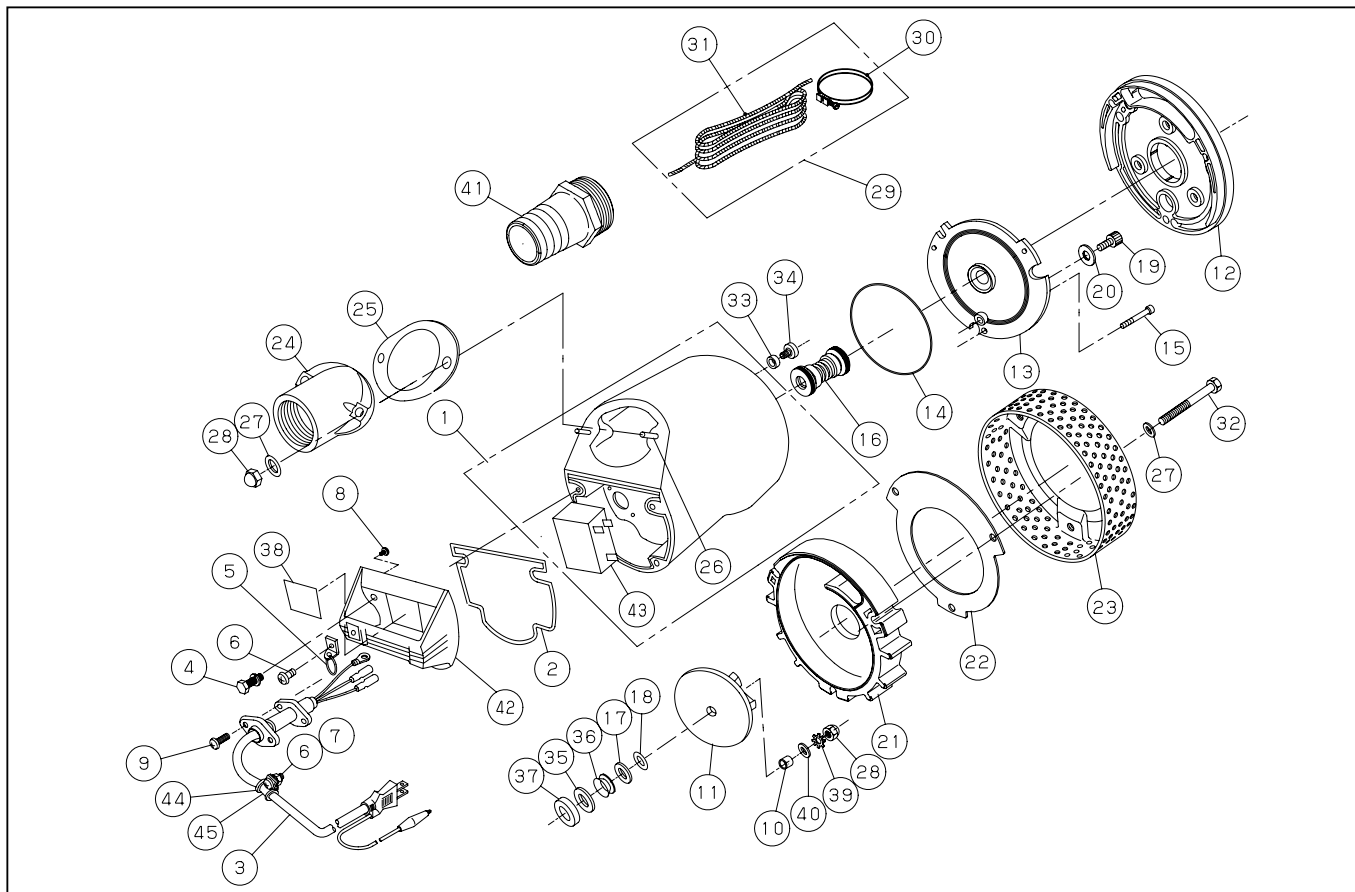
**PX-55022**



DWG No.043856111 MODEL:PX-55022 FORM:PX-55022-BAA-1

No.	PARTS CODE	PARTS NAME	QTY	MATERIAL	SIZE	REMARKS
1	043809702	MOTOR ASSY	1			
2	043040101	HEAD PACKING	1			
3	043028901	POWER CORD	1			
4	043040601	HEXAGON BOLT	4	SUS	M6X18	
5	043809201	CHAIN ASSY	1			
6	039048301	+ SCREW	2	SUS	M5X10	
7	043040901	HEXAGON NUT	1	SUS	M5	
8	043041001	+ SCREW	1	SWRM	M4X6	
9	043041101	+ SCREW	2		M5X14	
10	043044101	IMPELLER FIXING BUSH	1	SUS		
11	043028505	IMPELLER	1			
12	043027302	BACK LINER	1	NBR		
13	043027103	FRONT COVER	1	ADC		
14	889955125	O-RING	1	NBR	G125	
15	734505037	HEXAGON SOCKET BOLT	3	SUS	M5X20	
16	039000301	MECHANICAL SEAL	1	DE560		
17	043030001	IMPELLER WASHER	1	SUS		
18	039002501	IMPELLER ADJUSTING WASHER	2	SUS		
19	039003702	HEXAGON SOCKET BOLT	1	SUS	M10X12	
20	854255010	SEAL WASHER	1		φ 10	
21	043027404	CASING	1			
22	043026901	SUCTION COVER	1	SUS		
23	043027001	STRAINER	1	SPCC		
24	043030501	DELIVERY FLANGE	1	ADC		
25	043028301	DELIVERY PACKING	1	NBR		
26	043029001	STUD BOLT	2		M8X36X11/21	
27	846005008	WASHER	5	SUS	φ 8	
28	835305008	HEXAGON CAP NUT	3	SUS	M8	
29	043807003	ACCESSORY SET	1			
30	940019060	HOSE BAND	1		φ 60	

PX-55022



DWG No.043856111 MODEL:PX-55022 FORM:PX-55022-BAA-1

No.	PARTS CODE	PARTS NAME	QTY	MATERIAL	SIZE	REMARKS
31	039010101	ROPE	1		5M	
32	735705162	HEXAGON BOLT	3	SUS	M8X70	
33	034014202	SM SEAL RING	1	NBR		
34	034015301	+ SCREW	1	SUS	M6X8	
35	043030101	THRUST WASHER	1	SUS		
36	895154014	OIL SEAL	1		VR14A	
37	043029901	THRUST PACKING	1	CR		
38	043031702	LABEL	1			
39	845305008	TOOTHED WASHER	1	SUS	8B	
40	846505008	WASHER	1	SUS	φ 8-1.6	
41	039021301	HOSE NIPPLE	1			
42	043040401	HANDLE	1			
43	043039301	CONDENSER	1		8 μ F480VAC	
44	039003101	CORD SUPPORTER	1	CR		
45	026001801	CORD BAND	1	SUS		
	039038301	PARAFFIN OIL		230cc		@160/100cc
	043031902	PACKING CASE	1			
	043031803	OPERATION MANUAL	1			
	043029702	LABEL	1			
	043031102	CAUTION LABEL	1			