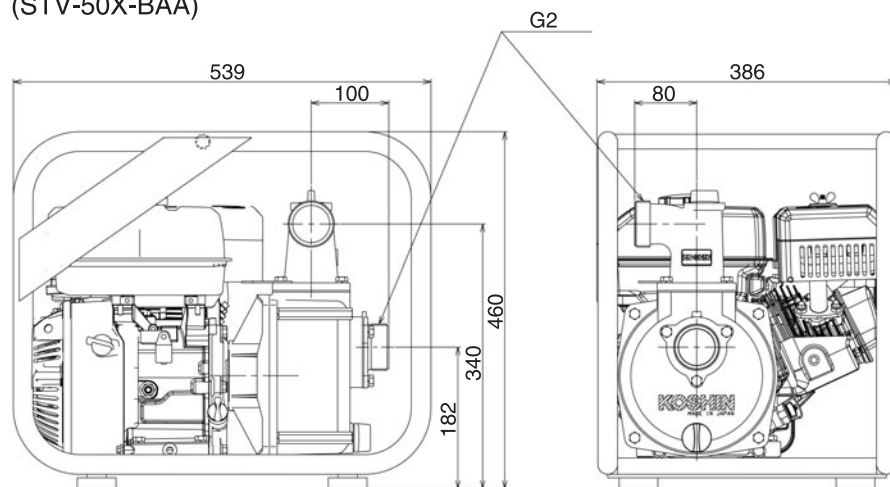
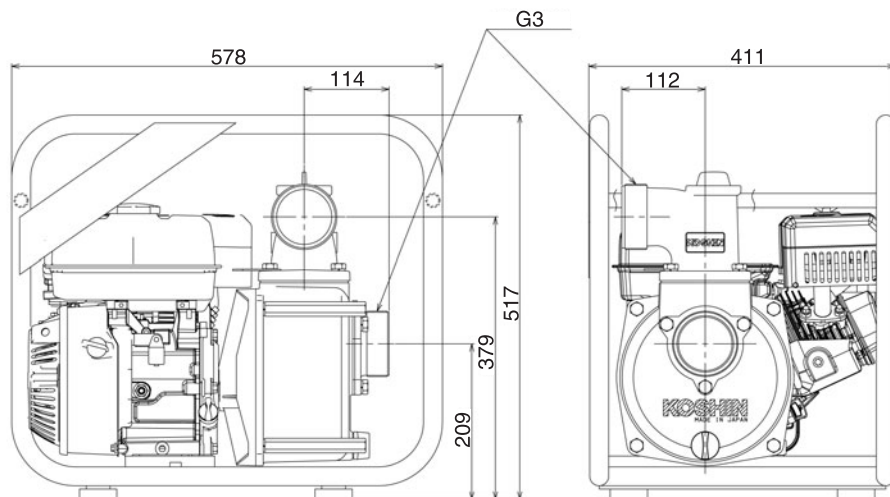


OUTLINE DRAWING  
DESSIN AU TRAIT  
UMRISSZEICHNUNG ZEICHNUNG  
FIGURA DI FORMA ESTERNA  
FIGURA DE DIMENSION EXTERNA

(STV-50X-BAA)



(STV-80X-BAA)



\*Specifications are differs slightly depending on model.

Engine Pump  
Moto-pompe  
motorpumpe  
Motopompa  
Bomba del Motor

Model  
Modèle  
Modell  
Modello  
Modelo

《STV-X》

INSTRUCTION MANUAL  
MANUEL D'UTILISATION  
BEDIENUNGSANLEITUNG  
MANUALE D'USO  
MANUAL DE INSTRUCCIONES

Original instructions

**KOSHIN LTD.** [www.koshinpump.com](http://www.koshinpump.com)

12 Kami-Hachinotsubo Kotari, Nagaokakyo City, Kyoto 617-8511 JAPAN  
TEL.+81-75-953-2499 FAX.+81-75-954-6119

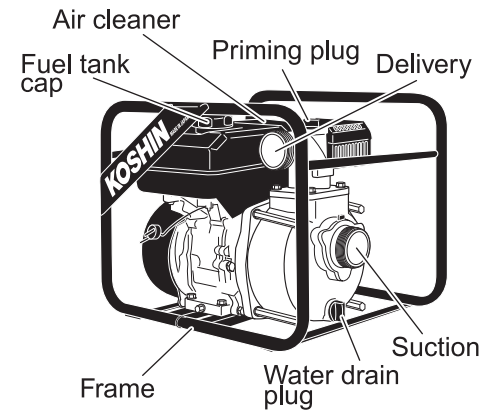
# High Performance Thermoplastic Engine Pump SEMI-TRASH PUMP

EN

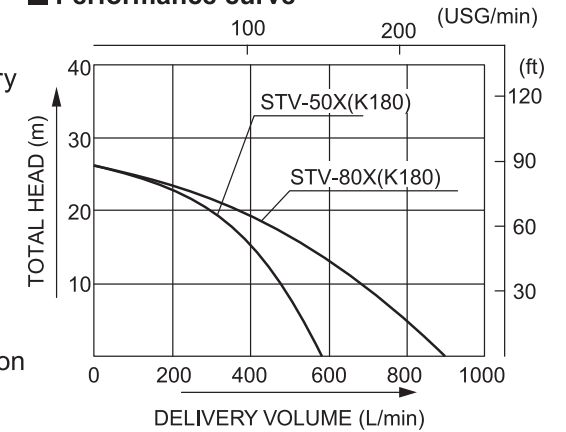
## OPERATION MANUAL

- Thank you for choosing Koshin Semi-Trash Pump.
- This manual is prepared for your safety when operating pump. Please read carefully and comprehend fully before use. (Wrong usage could cause injury or death.)
- Please keep this manual handy for future reference.

### ■ Nomenclature



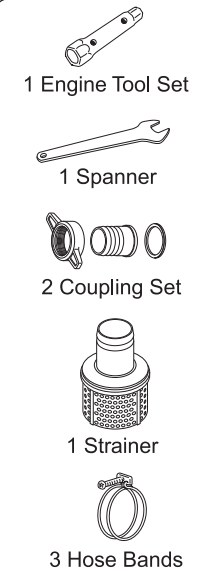
### ■ Performance curve



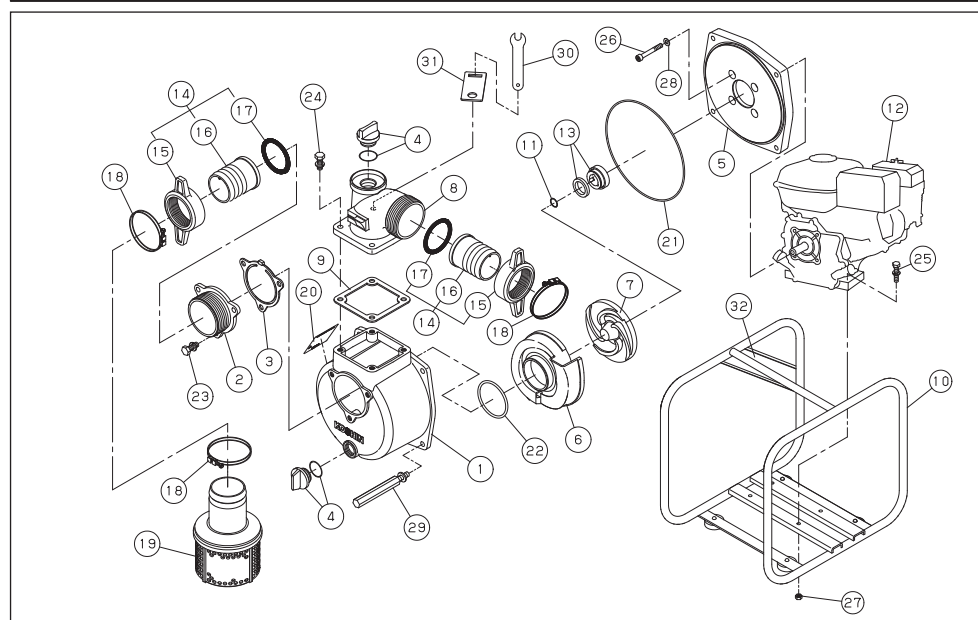
### ■ Specifications

Model	STV-50X	STV-80X	
PUMP	Connection Dia	2" (50mm)	3" (80mm)
	Connection Thread	Outer Pipe Thread	
	Total Head	26m (85ft)	
	Delivery Volume	580L/min (153USG/min)	900L/min (238USG/min)
ENGINE	Max. Suction Head	8m (26ft)	
	Model	K180	
		Forced Air Cooled 4 Cycle Gasoline Engine	
	Exhaust Volume	179cc	
	Output	3.1kW (4.2PS)/3600rpm	
	Fuel	Automobile Unleaded Gasoline	
	Fuel Tank capacity	3.6L (0.95gal)	
	Fuel Consumption Hour	Approx. 2.6hour(full tank)	Approx. 2.4hour(full tank)
Starting Method	Recoil Starter		
Standard Accessory	1 Strainer, 1 Spanner, 1 Engine Tool Set, 2 Hose Coupling, 3 Hose Bands		
Net Weight	29kg (63lb)	30.9kg (68lb)	

### ■ Standard Accessories



## PARTS LIST

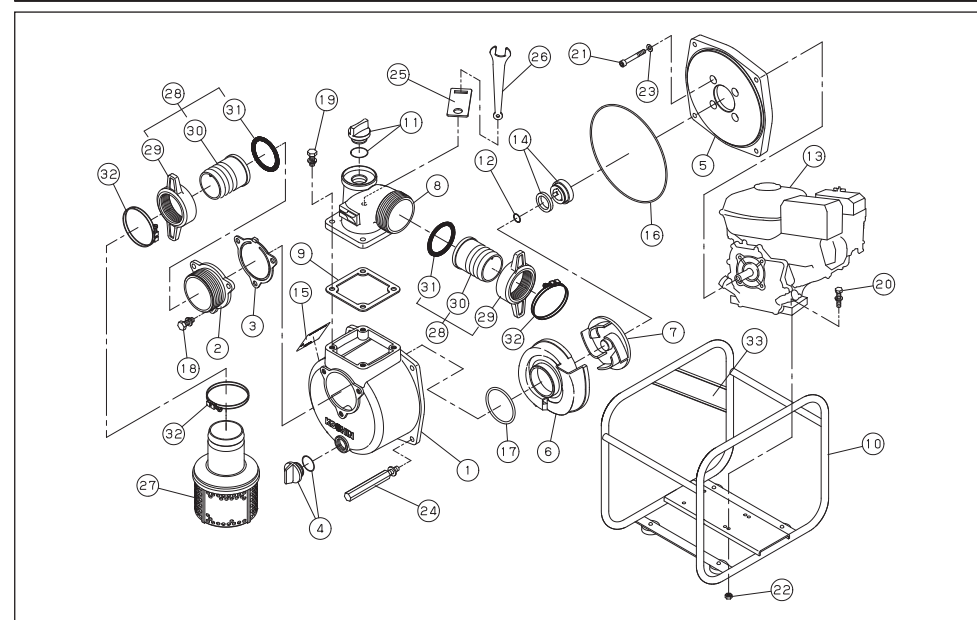


## STV-50X

No.	PARTS CODE	PARTS NAME	QTY	No.	PARTS CODE	PARTS NAME	QTY
1	0120195	PUMP CASE	1	18	940019060	HOSE BAND $\phi$ 60	3
2	0112662	SUCTION FLANGE	1	19	0111286	STRAINER	1
3	0112665	CHECK VALVE	1	20	0121414	NAME PLATE	1
4	0118078	20A PLUG SET	2	21	0115014	O-RING 1517-42.5	1
5	0114027	FLANGE BRACKET	1	22	0112792	O-RING P54	1
6	0115169	VOLUTE CASING	1	23	743119045	BOLT M8x20	3
7	0121342	IMPELLER	1	24	743119047	BOLT M8x25	4
8	0110556	DELIVERY FLANGE	1	25	743119053	BOLT M8x40	4
9	0110541	FLANGE PACKING	1	26	734532076	SOCKET BOLT M8x60	4
10	0128366	BASE SET	1	27	827419008	NUT M8	4
11	0110491	IMPELLER ADJUSTING WASHER	3	28	854255008	SEAL WASHER $\phi$ 8	4
12	—	ENGINE	1	29	0115115	LONG BOLT M8x118	4
13	0115159	MECHANICAL SEAL	1	30	0115185	SPANNER 13MM	1
14	0117026	COUPLING SET	2	31	0115230	SPANNER HOLDER 13MM	1
15	0113390	COUPLING	2	32	0122307	SIDE PANEL LABEL	1
16	0110356	HOSE NIPPLE	2				
17	0113391	COUPLING PACKING 60	2				

Spare parts list is written in English only.

## PARTS LIST



## STV-80X

No.	PARTS CODE	PARTS NAME	QTY	No.	PARTS CODE	PARTS NAME	QTY
1	0120196	PUMP CASING	1	18	743119061	BOLT M10x25	3
2	0112797	SUCTION FLANGE	1	19	743119063	BOLT M10x30	4
3	0112799	CHECK VALVE	1	20	743119053	BOLT M8x40	4
4	0118078	20A PLUG SET	1	21	734532075	SOCKET BOLT M8x55	4
5	0120931	FLANGE BRACKET	1	22	827419008	NUT M8	4
6	0115541	VOLUTE CASING	1	23	854255008	SEAL WASHER $\phi$ 8	4
7	0115539	IMPELLER	1	24	0115542	LONG BOLT M10x160	4
8	0110570	DELIVERY FLANGE	1	25	0115588	SPANNER HOLDER 17MM	1
9	0110584	FLANGE PACKING	1	26	0115589	SPANNER 17MM	1
10	0128367	BASE SET	1	27	0113242	STRAINER	1
11	0118079	25A PLUG SET	1	28	0117028	COUPLING SET	2
12	0110491	IMPELLER ADJUSTING WASHER	3	29	0114375	COUPLING	2
13	—	ENGINE	1	30	0110301	NIPPLE	2
14	0115159	MECHANICAL SEAL	1	31	0114378	COUPLING PACKING	2
15	0121417	NAME PLATE	1	32	940019090	HOSE BAND $\phi$ 90	3
16	0115015	O-RING 1517-46.5	1	33	0122307	SIDE PANEL LABEL	1
17	0113989	O-RING P74	1				