

# "FS PUMPS" Marine Self-priming Pump for Seawater

- Specially designed for use with seawater.
- Pump and motor are constructed to withstand seawater and operated by DC 24V power source.
  1. Seawater proof motor: These motors are specially designed for seawater applications.
  2. Special aluminum compound for motor casing is made to withstand seawater corrosion.

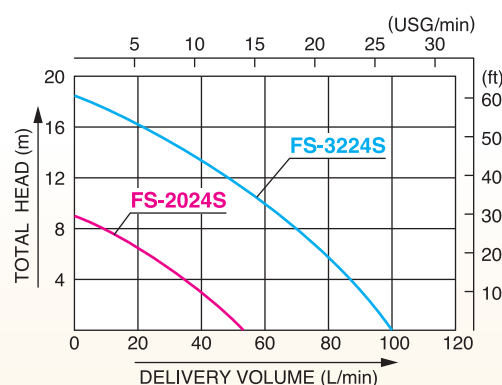


FS-3224S

## Specification

Model	FS-2024S	FS-3224S
Connection Dia	20 mm (3/4")	32 mm (1 1/4")
Connection Thread	Inner Pipe Thread	
Total Head	9 m (30 ft)	18.5 m (60 ft)
Delivery Volume	50 L/min (13 USG/min)	100 L/min (26 USG/min)
Voltage	DC 24 V	
Rated Current	7 A	16 A
Output	90 W / 7000 rpm	200 W / 6200 rpm
Rating	Continuous	
Power Cord	3 m (10 ft)	5 m (16 ft)
Standard Accessories	1 Strainer, 2 Hose Nipples, 1 Set Carbon Brush	
Net Weight	4.5 kg (10 lbs)(1 unit)	7.8 kg (17 lbs)(1 unit)
Gross Weight	28.5 kg (62.8 lbs)(5 units)	28 kg (62 lbs)(3 units)
Dimensions LxWxH (mm)	780 x 295 x 237	555 x 385 x 325
Packing Unit	5	3

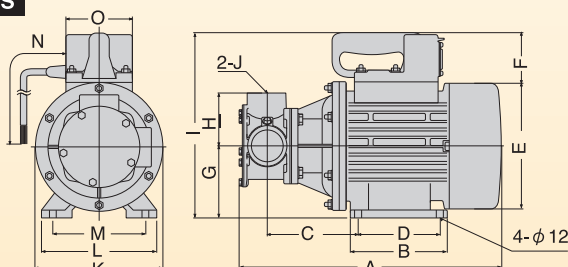
## Performance Curve



## OUTLINE DRAWING

### REVOLVEX PUMP

MF-40MS

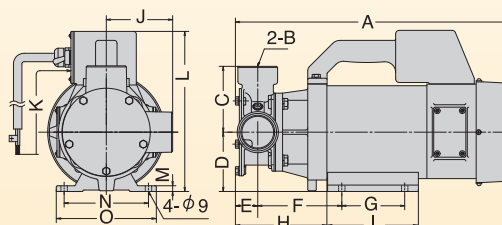


Model	A	B	C	D	E	F	G	H	I	J	K	L	M	N	O
MF-40MS	407	150	143	120	200	90	105	80	293	Rp1/2"	200	170	140	9700	120

### RUBBER MASTER

MF-2524

MF-4024X

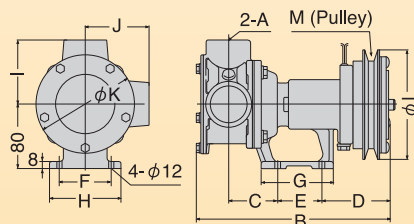


Model	A	B	C	D	E	F	G	H	I	J	K	L	M	N	O
MF-2524	281.5	Rp1"	63	60	29	119.5	66	133.5	96	63	5000	205	10	100	120
MF-4024X	386	Rp1/2"	95	83	31.5	118.5	88	129	128	95	5000	226.5	8	118	140

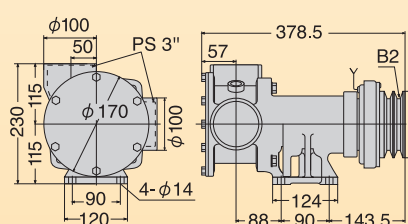
[Shaft Size]

- MF-25S
- MF-40S
- MF-50S
- MFC-80S
- MF65 Series

MF— MFC—



MFC-80S



Model	A	B	C	D	E	F	G	H	I	J	K	L	M	N(Pulley)
MF-25S·MFC-25S	Rp1"	219(234)	60	72(864)	50	60	85	85	70	70	108	136.5	80	B1
MF-40S·MFC-40S	Rp1 1/2"	232(247)	62.5	74(88)	55	65	90	90	80	80	123	136.5	80	B1
MF-50S·MFC-50S	Rp2"	311(335)	90.5	85.5(108.5)	80	80	105	105	95	95	123	130	91	B2
MFL(C)-65K·MFC-65K	Rp1/2"	384(403)	105	124.5(143.5)	90	90	120	120	115	115	170	130	115	B2