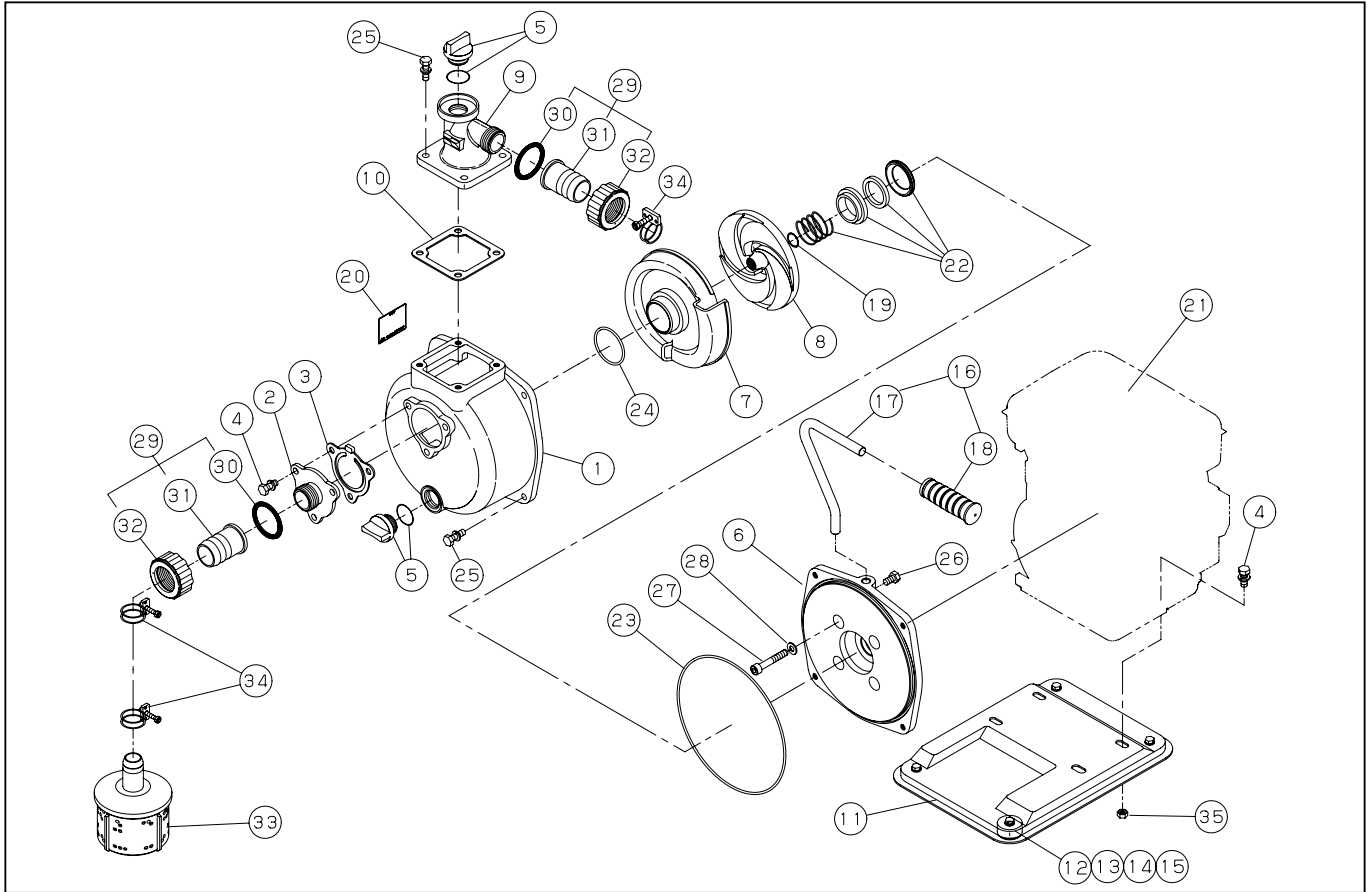


**SEM-25F**

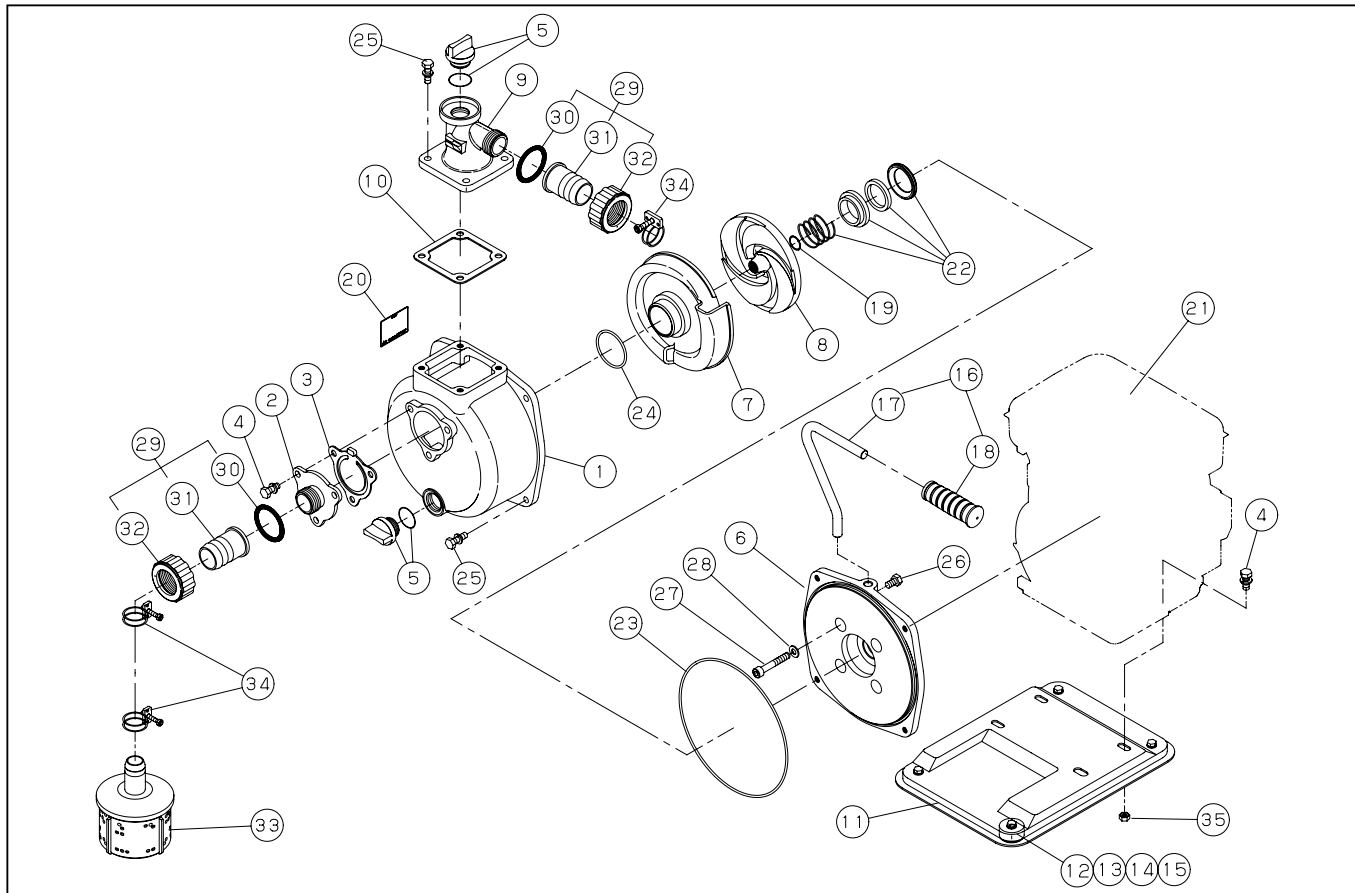


DWG No.011944114 MODEL:SEM-25F (GM82PN) FORM:SEM-25F-BAC-8

No.	PARTS CODE	PARTS NAME	QTY	MATERIAL	SIZE	REMARKS
1	011333001	PUMP CASING	1	ADC		
2	011400201	SUCTION FLANGE	1	ADC		
3	011332801	CHECK VALVE	1	NBR		
4	743119045	HEXAGON BOLT	7	SWRM	M8X20	
5	011807802	20A PLUG SET	2			
6	011057904	FLANGE BRACKET	1	ADC		
7	011422102	VOLUTE CASING	1	ADC		
8	011331903	IMPELLER	1	ADC		
9	011144903	DELIVERY FLANGE	1	ADC		
10	011059301	FLANGE PACKING	1	CR		
11	011803904	BASE SET	1	SPC		
12	011041702	25 CUSHION RUBBER	4	F-23		
13	743119030	HEXAGON BOLT	4	SWRM	M6X16	
14	827419006	HEXAGON NUT	4	SWRM	M6	
15	846207106	WASHER	4	19 T 1.2	1/4 φ	
16	011809102	HANDLE SET	1			
17	011270002	HANDLE	1			
18	011011003	HANDLE RUBBER	1	F-23		
19	011011401	IMPELLER ADJUSTING WASHER	3	BSP		
20	011484005	NAME PLATE	1			
21	011532602	MITSUBISHI ENGINE	1	GM82PN-71F		
22	011067301	MECHANICAL SEAL	1	HG9A-MN	φ 15	
23	011501401	O-RING	1	NBR	1517-42.5	
24	889855048	O-RING	1	NBR	P48	
25	743119047	HEXAGON BOLT	8	SWRM	M8X25	
26	735719145	HEXAGON BOLT	1		M8X14	
27	734532074	HEXAGON SOCKET BOLT	4	SCM	M8X50	
28	854255008	SEAL WASHER	4		φ 8	
29	034812401	COUPLING SET	2		25mm	
30	034006501	COUPLING PACKING	2	CR		

◆ Bare engine can not be supplied

**SEM-25F**



DWG No.011944114 MODEL:SEM-25F (GM82PN) FORM:SEM-25F-BAC-8

No.	PARTS CODE	PARTS NAME	QTY	MATERIAL	SIZE	REMARKS
31	034078201	HOSE NIPPLE	2	ABS		
32	034078101	COUPLING	2	ABS		
33	011819301	STRAINER SET	1			
34	940019032	HOSE BAND	3		φ 32	
35	827419008	HEXAGON NUT	4	SWRM	M8	
	011425207	PACKING CASE	1			
	011483505	OPERATION MANUAL	1			
	011473401	ENGINE CAUTION LABEL A	1			
	011473501	ENGINE CAUTION LABEL B	1			
	011471806	CE MARK LABEL	1			
	011474102	CAUTION LABEL	1			
	011488404	DECLARATION	1			
	011641101	EU NOISE LABEL	1			

◆ Bare engine can not be supplied