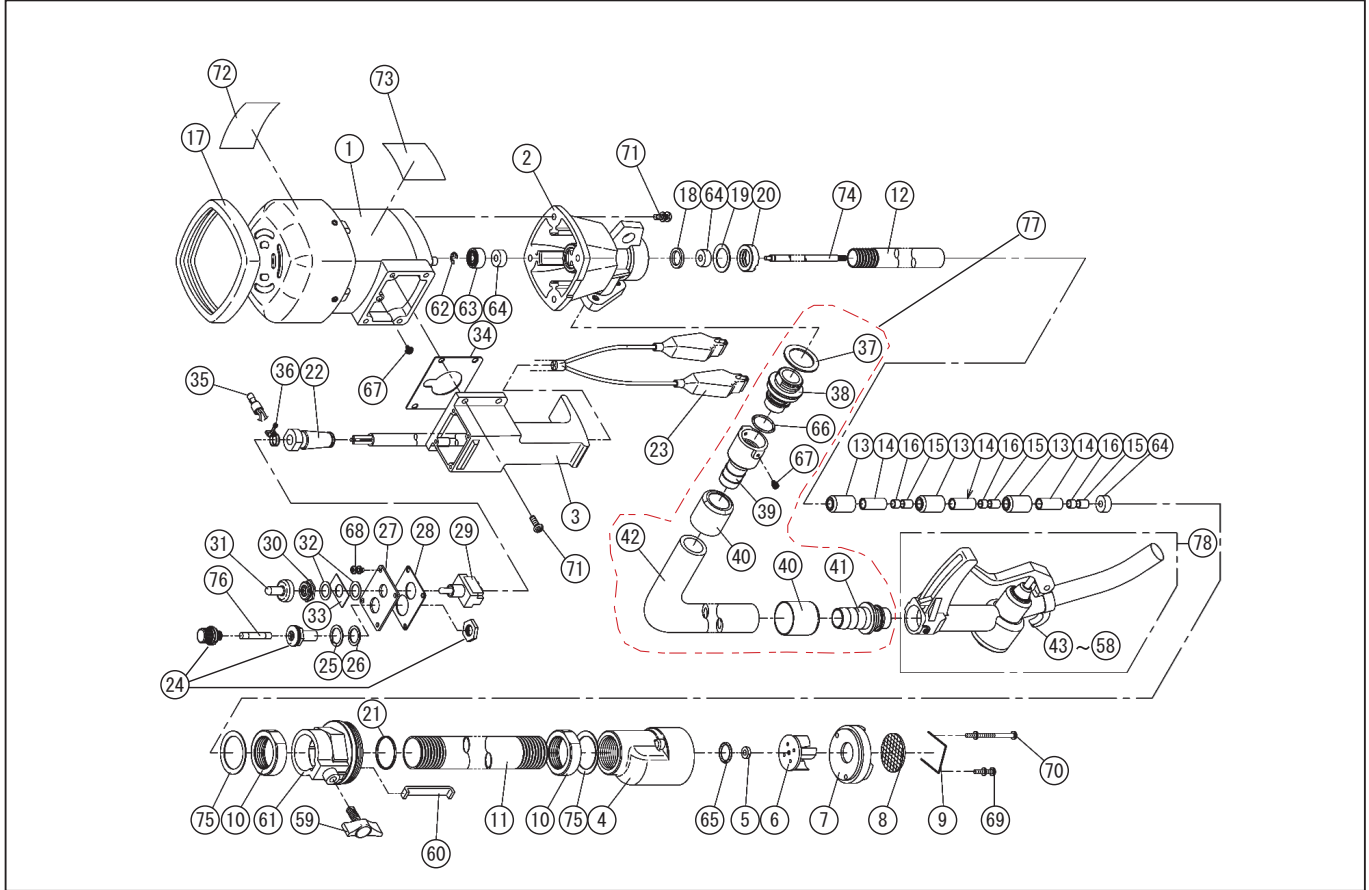


DWG No.004852420 MODEL:FD-24 FORM:FD-24-BAA-2

| No. | PARTS CODE | PARTS NAME | QTY | MATERIAL/SIZE | REMARKS |
|-----|------------|----------------------------|-----|---------------------------|---------|
| 1 | 0040563 | FD-24 MOTOR | 1 | 24V | |
| 2 | 0040079 | CAPSULE | 1 | ADC | |
| 3 | 0040021 | HANDLE | 1 | ADC | |
| 4 | 0040080 | PUMP BODY | 1 | ADC | |
| 5 | 0040005 | THRUST METAL | 1 | BS | |
| 6 | 0040003 | RESIN BLADE | 1 | NYLON6 WITH INSERT SLEEVE | |
| 7 | 0040081 | PUMP COVER | 1 | ZDC | |
| 8 | 0040084 | FILTER | 1 | SUS | |
| 9 | 0040085 | FILTER STOPPER | 1 | SUS | |
| 10 | 0040013 | PIPE NUT | 2 | ZDC | |
| 11 | 0040086 | OUTER PIPE | 1 | ELECTRICAL STEEL WIRE PI | |
| 12 | 0040087 | INTERMEDIATE BEARING PIPE | 1 | | |
| 13 | 0040016 | RUBBER BUSHING | 3 | NBR | |
| 14 | 0040017 | INTERMEDIATE STEEL BUSHING | 3 | S15C | |
| 15 | 0040099 | BEARING METAL | 3 | 6×8×10 MB0610DU | |
| 16 | 0040100 | BEARING METAL | 3 | 6×8×6 MB0606DU | |
| 17 | 0040020 | CUSHION GUM | 1 | NBR | |
| 18 | 0040011 | INTERMEDIATE PIPE PACKING | 1 | NBR | |
| 19 | 0040029 | INTERMEDIATE PLATE SPRING | 1 | SUP | |
| 20 | 0040010 | INTERMEDIATE PIPE NUT | 1 | S35C | |
| 21 | 0040019 | CAPSULE PACKING | 1 | | |
| 22 | 0040126 | CORD BUSH (DC) | 1 | NBR | |
| 23 | 0051045 | FD-12,24 AC CORD | 1 | VCT2SQ×5m | |
| 24 | 0040101 | FUSE HOLDER | 1 | ECHO FH-001AF | |
| 25 | 0040027 | HOLDER WASHER | 1 | BS | |
| 26 | 0040028 | HOLDER PACKING | 1 | NBR | |
| 27 | 0040023 | SWITCH BOARD | 1 | SS | |
| 28 | 0040024 | SWITCH PACKING | 1 | | |
| 29 | 0040102 | SNAP SWITCH | 1 | | |
| 30 | 0040025 | SWITCH NUT | 1 | BS6WITH HEXAGON FLANG | |

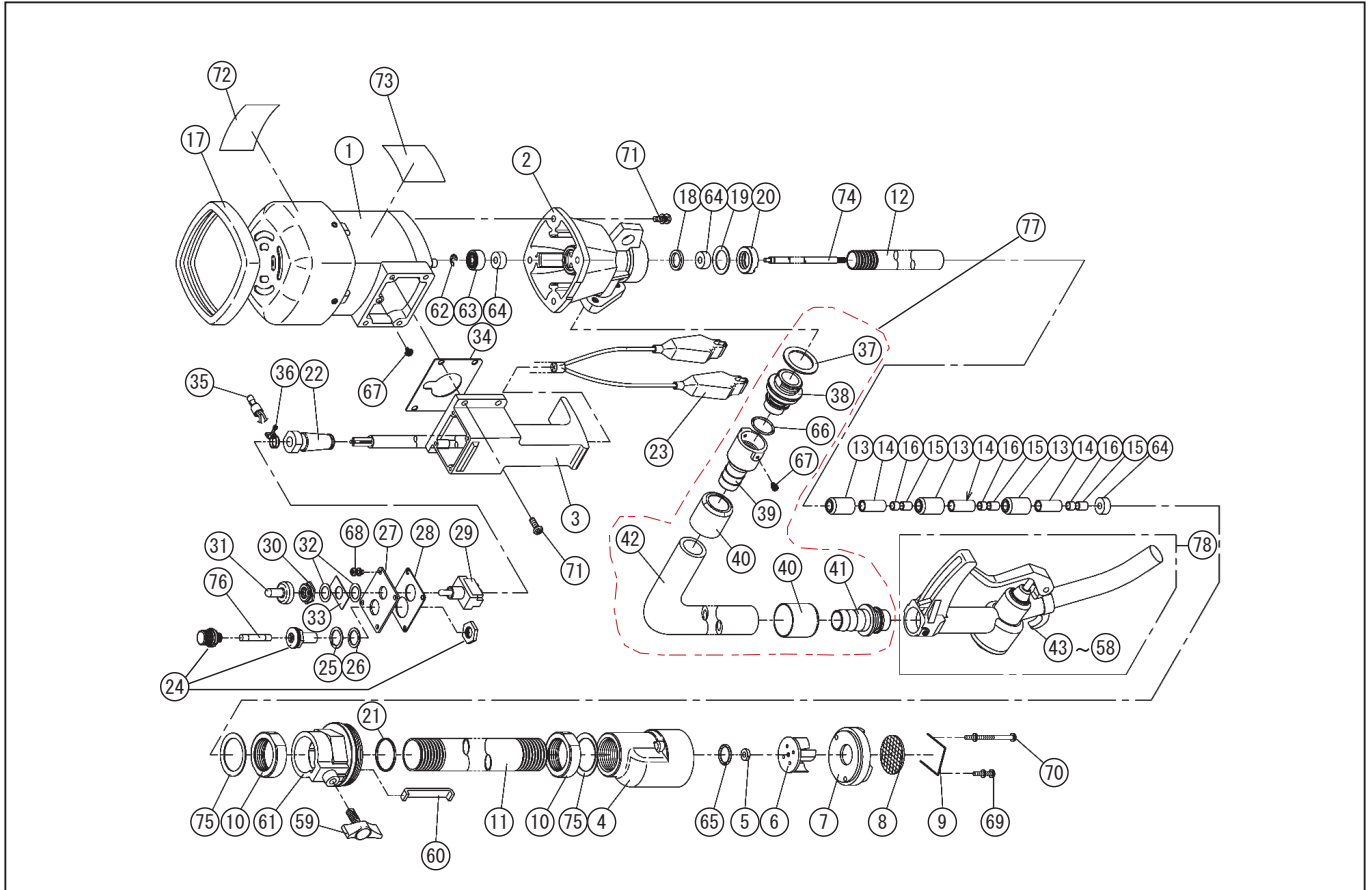
◆ Bare engine can not be supplied



DWG No.004852420 MODEL:FD-24 FORM:FD-24-BAA-2

| No. | PARTS CODE | PARTS NAME | QTY | MATERIAL/SIZE | REMARKS |
|-----|------------|----------------------------|-----|--------------------------|---------|
| 31 | 0040026 | SWITCH GUM | 1 | NBR | |
| 32 | 0040036 | SWITCH SEAL | 2 | | |
| 33 | 0040103 | ON-OFF PLATE | 1 | WD1901 | |
| 34 | 0040022 | HANDLE PACKING | 1 | | |
| 35 | 944500005 | SOLDERLESS CONNECTOR | 1 | CE-5 | |
| 36 | 940119010 | HOSE BAND | 1 | φ 10 | |
| 37 | 0040038 | FLANGE PACKING | 1 | | |
| 38 | 0040041 | HEXAGON FLANGE | 1 | ZDC | |
| 39 | 0040044 | STRAIGHT FLANGE | 1 | ZDC | |
| 40 | 0040042 | HOSE PIPE | 2 | ALP | |
| 41 | 0040043 | NOZZLE FLANGE | 1 | ZDC | |
| 42 | 0040095 | HOSE | 1 | | |
| 43 | 0080033 | QU-20 OIL FEED NOZZLE BODY | 1 | ADC | |
| 44 | 0080034 | QU-20 VALVE GUIDE | 1 | ADC | |
| 45 | 0080012 | QU-20 SEAL BUSHING | 1 | BS | |
| 46 | 0080007 | QU-20 NOZZLE LOT | 1 | SUS | |
| 47 | 0080010 | QU-20 GUM | 1 | NBR | |
| 48 | 0080005 | QU-20 GUIDE | 1 | ADC | |
| 49 | 0080035 | QU-20 CAP | 1 | ADC | |
| 50 | 0080013 | QU-20 PRESS LEVER | 1 | SS | |
| 51 | 0080008 | QU-20 NOZZLE PIPE | 1 | ELECTRICAL STEEL WIRE PI | |
| 52 | 0080009 | QU-20 NOZZLE SPRING | 1 | SWP | |
| 53 | 889855030 | O-RING | 1 | P30 NBR | |
| 54 | 889855006 | O-RING | 1 | P6 NBR | |
| 55 | 889855020 | O-RING | 1 | P20 NBR | |
| 56 | 850819136 | RIVET | 1 | 3X12 SWRM | |
| 57 | 708119019 | + SCREW | 2 | M3X8 SWRM | |
| 58 | 0080016 | QU-20 PRESS LEVER PLATE | 1 | CU | |
| 59 | 0010015 | SC-20 WING BOLT | 1 | PC | |
| 60 | 0050013 | FR-100 STOPPER | 1 | SPC | |

◆ Bare engine can not be supplied



DWG No.004852420 MODEL:FD-24 FORM:FD-24-BAA-2

| No. | PARTS CODE | PARTS NAME | QTY | MATERIAL/SIZE | REMARKS |
|-----|------------|-----------------------|-----|---------------|---------|
| 61 | 0040127 | DRUM ADAPTER | 1 | ADC | |
| 62 | 888327006 | SHAFT STOP RING | 1 | | |
| 63 | 912706006 | BEARING | 1 | 626ZZ | |
| 64 | 893555003 | OIL SEAL | 3 | 6×16×7 | |
| 65 | 889855018 | O-RING P18 | 1 | P18 NBR | |
| 66 | 889855020 | O-RING | 1 | P20 NBR | |
| 67 | 708119019 | SPRING WASHER + SCREW | 2 | M3X8 SWRM | |
| 68 | 707819037 | + SCREW | 4 | M4X10 SWRM | |
| 69 | 0040431 | + SCREW | 1 | M4X18 SWRM | |
| 70 | 0040432 | + SCREW | 1 | M4X40 | |
| 71 | 707819047 | + SCREW | 8 | M5X14 SWRM | |
| 72 | 0040064 | CAUTION LABEL | 1 | VINYLON | |
| 73 | 0040572 | FD-24-BAA-2- LABEL | 1 | | |
| 74 | 0040015 | ROD | 1 | S45C | |
| 75 | 0040014 | SPRING | 2 | SUP | |
| 76 | 945300017 | FUSE | 2 | 10A | |
| 77 | 0048010 | DELIVERY HOSE SET | 1 | | |
| 78 | 0088502 | NOZZLE ASSY | 1 | | |

◆ Bare engine can not be supplied