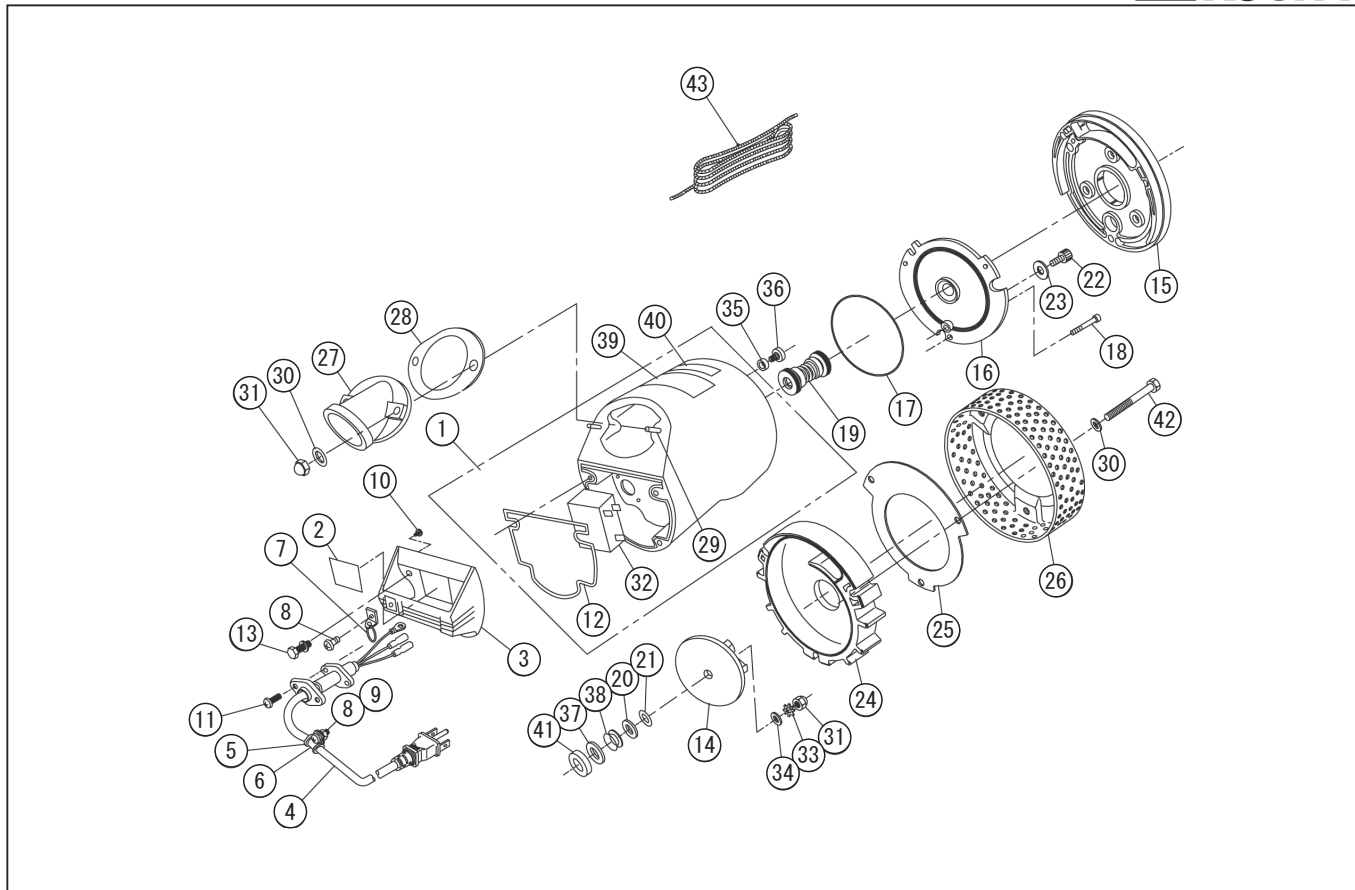


DWG No.043857622 MODELE : PX-65011 FORM : PX-65011-BAC-1

No.	PARTS CODE	PARTS NAME	QTY	MATERIAL/SIZE	REMARKS
1	043817003	400W MOTOR ASSY	1		
2	043038805	LABEL	1		
3	043026803	HANDLE	1	ADC	
4	043030802	PX-50 UL POWER CORD	1	STW WA 3/16AWG	
5	039003101	CORD SUPPORTER	1	CR	
6	026001801	CORD BAND	1	SUS	
7	043806601	CHAIN ASSY	1		
8	703305100	SCREW M5*10	2	M5×10 SUS	
9	827305005	NUT M5	1	M5 SUS	
10	707820074	+ SCREW	1	M4×6 SWRM	
11	703305102	SCREW M5*14	2	M5×14 SUS	
12	043028403	HEAD PACKING	1	NBR	
13	743605031	HEXAGON BOLT	4	M6×18 SUS	
14	043028008	IMPELLER	1		
15	043027303	BACK LINKER	1		
16	043027105	PX-50 FRONT COVER	1	ADC	
17	889955125	O-RING	2	G125 NBR	
18	734505037	HEXAGON SOCKET BOLT	3	M5×20 SUS	
19	039000302	PS-40 MECHANICAL SEAL(TYPE PS0014)	1	DE560	
20	043030001	IMPELLER WASHER	1	SUS304	
21	039002501	IMPELLER ADJUSTING WASHER	2	SUS	
22	039003702	SOCKET BOLT M10*12	1	M10×12 SUS CS	
23	854255010	SEAL WASHER	1	φ 10	
24	043027404	CASING	1		
25	043026901	SUCTION COVER	1	SUS304	
26	043027001	STRAINER	1	SPCC T2.0	
27	043030601	PX-50 NPT DELIVERY FLANGE	1	AC-7A	
28	043028302	DELIVERY PACKING	1	NBR	
29	043029001	STUD BOLT	2	M8×36×11/21	
30	846005008	WASHER	5	φ 8 SUS	

◆ Bare engine can not be supplied



DWG No.043857622 MODELE : PX-65011 FORM : PX-65011-BAC-1

No.	PARTS CODE	PARTS NAME	QTY	MATERIAL/SIZE	REMARKS
31	835305008	CAP NUT	3	M8 SUS	
32	043039202	PX-110V CONDENSER	1	32 μ F 260VAC	
33	845305008	TOOTHED WASHER	1	8B SUS	
34	846505008	WASHER	1	ISO ϕ 8-1.6 SUS	
35	034014202	SEAL RING	1	NBR	
36	034015301	+ SCREW M6X8	1	M6 \times 8 SUS	
37	043030102	THRUST WASHER	1	SUS304	
38	043060101	OIL SEAL	1	VR14A	
39	043029702	LOGO LABEL	1		
40	043031102	CAUTION LABEL	1		
41	043029902	THRUST PACKING	1	CR70 $^{\circ}$	
42	735705162	HEXAGON BOLT	3	M8 \times 70 SUS	
43	039010101	ROPE	1	5 m	
	039038301	PARAFFIN OIL		230cc	